

This manual is for reference and historical purposes, all rights reserved.

This page is copyright© by M. Butkus, NJ.

This page may not be sold or distributed without the expressed permission of the producer

I have no connection with any camera company

On-line camera manual library

This is the full text and images from the manual. This may take 3 full minutes for the PDF file to download.

If you find this manual useful, how about a donation of \$3 to: M. Butkus, 29 Lake Ave., High Bridge, NJ 08829-1701 and send your e-mail address so I can thank you. Most other places would charge you \$7.50 for a electronic copy or \$18.00 for a hard to read Xerox copy.

This will allow me to continue to buy new manuals and pay their shipping costs.

It'll make you feel better, won't it?

**If you use Pay Pal or wish to use your credit card,
click on the secure site on my main page.**



KODAK



KODAKS

AND KODAK SUPPLIES



1924

EASTMAN KODAK COMPANY
ROCHESTER, N.Y.

The Kodak City



FROM A NEGATIVE MADE WITH THE NO. 3A AUTOGRAPHIC KODAK WITH
KODAK ANASTIGMAT LENS, *f*.7.7, AND KODAK PORTRAIT ATTACHMENT

When was it Made?

Without exception the interest of every picture is increased when the date on which it was made is known. The degree of added interest, of course, depends on the kind of picture, but every print has more to tell when the "When?" can be definitely answered.

This is particularly true of snap-shots of the children. "How old was Junior then?" is the natural query that rises to everyone's lips when the picture is shown. The date, here, saves the story.

Pictures made on trips where strange faces and places are encountered demand not only the date but the title to have their story complete.

This fact was recognized years ago by the Eastman Kodak Company and that is the reason all the folding Kodaks and Brownies are autographic and enable the amateur to date and title each negative at the time of exposure.

While you may not care to utilize the autographic feature for every exposure, it is there when you want it and when you do, you will find it of unqualified importance.

Autographic photography is exclusively Eastman—and autographic film costs no more than regular film.

"Kodakery" free for a year

Every new purchaser of a Kodak or Brownie is entitled to a year's free subscription to "Kodakery"—a generously illustrated, carefully edited photographic publication that will be found not only entertaining but a real help to better pictures.

The manual accompanying the camera contains a subscription blank which should be filled in and sent on to Rochester.

The regular subscription price of "Kodakery" is sixty cents a year.

Vest Pocket Autographic Kodak

(Fixed Focus Model)

Tiny as it is—and the accompanying illustration shows you just how small—the Vest Pocket Kodak is a photographic instrument that can be trusted. Slip it out, pull it out, press the release—and the picture is made. The lens is always in focus so that whenever the unexpected picture opportunity comes, you can get it before it goes.

The Vest Pocket Kodak makes pictures $1\frac{5}{8} \times 2\frac{1}{2}$ inches—and its optical and mechanical equipment is such that they're good pictures.

The fact that the Vest Pocket Kodak is autographic, and so small that you can *wear* it without inconvenience, fits it as a photographic note-book. It is ready to do all that a diary will do—and a great deal more.

An ideal equipment for sportsmen or others who may wish to travel light is the Belt Carrying Case of russet leather which offers the means of wearing the Vest Pocket Kodak on the belt. Here it is readily available when it's wanted and conveniently unobtrusive when it's not.

Even when every inch of space seems occupied, there's a fourth dimension this Kodak will fit—and you'll always be glad that you took it along.



VEST POCKET KODAK
REGULAR

*Actual size of all models
when closed*

The Vest Pocket Kodak is the smallest camera in the Kodak line but notwithstanding this fact, clever craftsmanship has found room for every photographic essential—even to the autographic feature. The Kodak Ball Bearing Shutter has automatic speeds of $\frac{1}{25}$ and $\frac{1}{50}$ of a second as well as time and “bulb” actions, the brilliant finder is reversible for vertical or horizontal pictures, and the lens is carefully tested. The all-metal body has Japan Crystal finish.

Details

Size of pictures: $1\frac{1}{8}$ x $2\frac{1}{2}$ inches. Size of Kodak: 1 x $2\frac{3}{8}$ x $4\frac{1}{4}$ inches. Capacity without reloading: 8 exposures. Weight: 11 ounces. Lenses: Meniscus Achromatic or Rapid Rectilinear, $3\frac{1}{2}$ -inch focus. Kodak Ball Bearing Shutter No. 0 with finger release only (cable release attachment sold separately). Speeds: $\frac{1}{25}$, $\frac{1}{50}$ second, and time and “bulb” actions. Brilliant finder; reversible for vertical or horizontal pictures. All metal body: Finish, Japan Crystal. Metal parts finished in nickel and black enamel. Black bellows. Autographic feature.

Prices

Vest Pocket Autographic Kodak, Meniscus Achromatic Lens and Kodak Ball Bearing Shutter	\$6.50
Ditto, with Rapid Rectilinear Lens	8.00
Leather Case for V. P. Kodak90
Leather Case, with strap	1.00
Belt Carrying Case (russet leather)	1.25
Autographic Film Cartridge, 8 exposures, $1\frac{1}{8}$ x $2\frac{1}{2}$ (No. A 127)25
Vest Pocket Cable Release Attachment (see page 61)50
Vest Pocket Kodak Tripod Adapter (see page 59).50
Kodak Portrait Attachment for Meniscus Achromatic Lens (see page 41)	.50
Kodak Portrait Attachment for Rapid Rectilinear Lens (see page 41) . .	.75
Kodak Self Timer (see page 52)	1.25

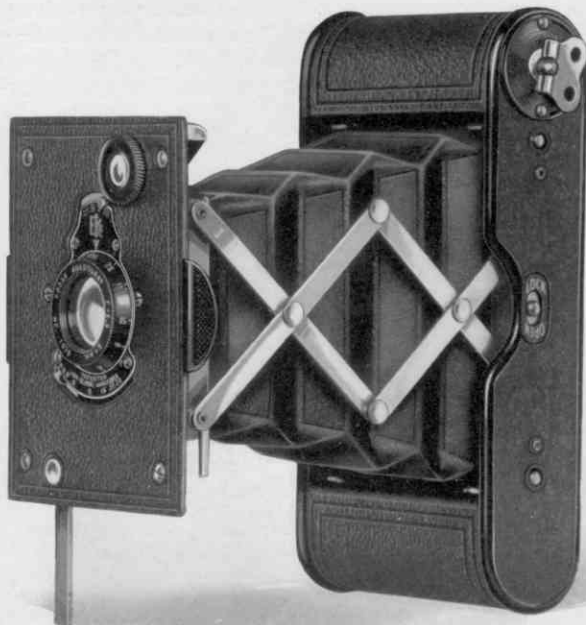
The prices of cameras and film include the Excise Tax

Vest Pocket Autographic Kodak *Special*

(Focusing Model)

Smart in appearance, smarter still in performance, the Vest Pocket Kodaks *Special* have much more than their compact size to recommend them. They are complete little photographic instruments, as your album page will show.

The camera is offered with the Kodak Anastigmat, *f.7.7*, or the Kodak Anastigmat, *f.6.9*, and with either lens a turn of the



If it isn't an Eastman, it isn't a Kodak

flange establishes sharp focus over a wide range of distances—ten in all—from three feet to 100. This ability to focus sharply with the subject as near as three feet makes possible head and shoulder portraits and other close-up work ordinarily requiring the use of the Kodak Portrait Attachment.

Vest Pocket Kodak *Special* has an all-metal body covered with Morocco grain leather.

The picture size is $1\frac{5}{8} \times 2\frac{1}{2}$ inches, and so critically sharp are negatives made with the Kodak Anastigmat Lens that, through enlarging, you can have larger prints when you like.



MADE AT THREE FEET WITH
REGULAR LENS EQUIPMENT
(Actual Size)

Details

Size of pictures: $1\frac{5}{8} \times 2\frac{1}{2}$ inches. Size of Kodak: $1 \times 2\frac{3}{8} \times 4\frac{3}{4}$ inches. Capacity without reloading: 8 exposures. Weight: 11 ounces. Adjustable focus. Lenses: Kodak Anastigmat, *f*6.9 and *f*7.7, $3\frac{1}{2}$ -inch focus. Kodak Ball Bearing Shutter No. 0 with finger release only (cable release attachment sold separately). Speeds: $\frac{1}{25}$, $\frac{1}{50}$ second, and time and “bulb” actions. Brilliant finder; reversible for vertical or horizontal pictures. All-metal body covered with Morocco grain leather. Metal parts finished in nickel and black enamel. Black bellows. Autographic feature.

Prices

Vest Pocket Autographic Kodak <i>Special</i> (focusing model), Kodak Anastigmat Lens, <i>f</i> 6.9, and Kodak Ball Bearing Shutter	\$15.00
Vest Pocket Autographic Kodak <i>Special</i> (focusing model), Kodak Anastigmat Lens, <i>f</i> 7.7, and Kodak Ball Bearing Shutter	13.00
Leather Case for V. P. Kodak90
Leather Case, with strap	1.00
Belt Carrying Case (russet leather).	1.25
Autographic Film Cartridge, 8 exposures, $1\frac{5}{8} \times 2\frac{1}{2}$ (No. A 127)25
Vest Pocket Cable Release Attachment (see page 61)50
Vest Pocket Kodak Tripod Adapter (see page 59)50
Kodak Self Timer (see page 52)	1.25

The prices of cameras and film include the Excise Tax

Nos. 1 and 1A Pocket Kodaks

Series II

(Fixed Focus Models)

The extent to which Kodak photography has been simplified is strikingly illustrated by the Pocket Kodaks, Series II. As the camera is opened, the lens, always in focus, automatically snaps into picture-making position. You're ready to click the shutter almost as soon as the camera's in your hand.



If it isn't an Eastman, it isn't a Kodak

The Nos. 1 and 1A, Series II, are similarly equipped. The lens is carefully tested; the shutter, Kodak Ball Bearing, with adjustable speeds of $\frac{1}{25}$, $\frac{1}{50}$ and $\frac{1}{100}$ of a second, is reliable and accurate, and the autographic attachment is countersunk so that the hand may have the flat surface of the camera back as support while the date and title are noted.

The only practical difference between the Nos. 1 and 1A Pocket Kodaks, Series II, is in the size of the pictures they make, $2\frac{1}{4} \times 3\frac{1}{4}$ and $2\frac{1}{2} \times 4\frac{1}{4}$ inches, respectively.

Both are pocket Kodaks and both bring to amateur photography a new convenience in picture-making.

Details

Size of pictures: No. 1, $2\frac{1}{4} \times 3\frac{1}{4}$ inches; No. 1A, $2\frac{1}{2} \times 4\frac{1}{4}$ inches. Size of Kodak: No. 1, $1\frac{5}{16} \times 3\frac{3}{16} \times 6\frac{7}{16}$ inches; No. 1A, $1\frac{9}{16} \times 3\frac{3}{16} \times 8$ inches. Capacity without reloading: No. 1, 6 exposures; No. 1A, 12 exposures. Weight: No. 1, 15 ounces; No. 1A, 23 ounces. Focus: Fixed. Lens: Meniscus Achromatic. Shutter: Kodak Ball Bearing with finger release. Speeds: $\frac{1}{25}$, $\frac{1}{50}$ and $\frac{1}{100}$ second, as well as time and "bulb" actions. Brilliant finder; reversible for horizontal or vertical pictures. Body: Aluminum. Covering: No. 1, Levant grain leather; No. 1A, fine seal-grain leather. Metal parts finished in nickel and black enamel. Black bellows. Autographic feature. Two tripod sockets.

Prices

	No. 1	No. 1A
Pocket Kodak, Series II (fixed focus), with Meniscus Achromatic Lens and Kodak Ball Bearing Shutter	\$13.50	\$15.00
Black Sole Leather Case, with strap	2.50	3.00
Autographic Film Cartridge, 12 exposures (No. A 116) for No. 1A60
Ditto, 6 exposures (No. A 120) for No. 1; (No. A 116) for No. 1A25	.30
Kodak Portrait Attachment (see page 41)75	.75
Kodak Self Timer (see page 52)	1.25	1.25
Cable Release for use with Kodak when opened35	.35

The prices of cameras and film include the Excise Tax

Nos. 1 and 1A Pocket Kodaks

Series II

(Focusing Models)

Here is a Kodak offered in two sizes—No. 1, Series II, for $2\frac{1}{4} \times 3\frac{1}{4}$ pictures, and No. 1A for pictures $2\frac{1}{2} \times 4\frac{1}{4}$ inches—that can claim unusual distinction on three counts.



If it isn't an Eastman, it isn't a Kodak



FOCUS IS AT YOUR
FINGER TIPS

In the first place, the lens is the famous, sharp-cutting Kodak Anastigmat, $f.7.7$, with Kodak Ball Bearing Shutter speeds of $\frac{1}{25}$, $\frac{1}{50}$ and $\frac{1}{100}$ of a second, as well as time and "bulb" actions. In the second place, the Self-erecting Front cuts picture preliminaries by springing the lens into position as the camera bed is dropped. In the third place, sharp focus is secured by merely turning the lens rim.

Autographic, of course.

Details

Size of pictures: No. 1, $2\frac{1}{4} \times 3\frac{3}{4}$ inches; No. 1A, $2\frac{1}{2} \times 4\frac{1}{4}$ inches. Size of Kodak: No. 1, $1\frac{5}{16} \times 3\frac{1}{16} \times 6\frac{7}{16}$ inches; No. 1A, $1\frac{9}{16} \times 3\frac{5}{16} \times 8$ inches. Capacity without reloading: No. 1, 6 exposures; No. 1A, 12 exposures. Weight: No. 1, $16\frac{1}{2}$ ounces; No. 1A, 26 ounces. Adjustable focus only. Lens: Kodak Anastigmat, $f.7.7$ —No. 1, $4\frac{1}{4}$ -inch focus; No. 1A, $5\frac{1}{4}$ -inch focus. Kodak Ball Bearing Shutter with finger release. Speeds: $\frac{1}{25}$, $\frac{1}{50}$ and $\frac{1}{100}$ second, as well as time and "bulb" actions. Brilliant finder; reversible for horizontal or vertical pictures. Body: Aluminum. Covering: No. 1, Levant grain leather; No. 1A, fine seal-grain leather. Metal parts finished in nickel and black enamel. Black bellows. Autographic feature. Two tripod sockets.

Prices

	No. 1	No. 1A
Pocket Kodak, Series II (focusing model), with Kodak Anastigmat Lens, $f.7.7$, and Kodak Ball Bearing Shutter	\$20.00	\$22.00
Black Sole Leather Case, with strap	2.50	3.00
Autographic Film Cartridge, 12 exposures (No. A 116) for		
No. 1A60
Ditto, 6 exposures (No. A 120) for No. 1; (No. A 116) for		
No. 1A25	.30
Kodak Portrait Attachment (see page 41)75	.75
Kodak Self Timer (see page 52)	1.25	1.25
Cable Release for use with Kodak when opened35	.35

The prices of cameras and film include the Excise Tax

Nos. 1 and 1A Autographic Kodak Juniors

Thoroughly practical picture-makers are the Juniors and you get that much at a glimpse. They are handy to handle, both from convenience in size and ease of operation and their price is conservative. Careful purchasers recognize the Juniors as "a good buy."



If it isn't an Eastman, it isn't a Kodak

Both the No. 1 and 1A offer the choice of fixed focus or adjustable focus, both have a reliable shutter with cable release, both are autographic, and finally, both are deftly designed and finely finished.

No. 1 Junior is offered with Kodak Ball Bearing Shutter and a choice of three lens equipments, including the Eastman-made Kodak Anastigmat, *f*.7.7.

No. 1A Junior offers a choice of three lens equipments with Kodak Ball Bearing Shutter, and may be secured as well with Kodak Anastigmat Lens and multiple speed shutter.

The No. 1 makes pictures $2\frac{1}{4} \times 3\frac{1}{4}$ inches; the No. 1A $2\frac{1}{2} \times 4\frac{1}{4}$ inches.

Details

Size of pictures: No. 1, $2\frac{1}{4} \times 3\frac{1}{4}$ inches; No. 1A, $2\frac{1}{2} \times 4\frac{1}{4}$ inches. Size of Kodak: No. 1, $1\frac{7}{16} \times 3\frac{5}{8} \times 6\frac{3}{8}$ inches; No. 1A, $1\frac{5}{8} \times 3\frac{3}{4} \times 8$ inches. Capacity: No. 1, 6 exposures; No. 1A, 12 exposures. Weight: No. 1, $21\frac{1}{2}$ ounces; No. 1A, $27\frac{1}{2}$ ounces. Focus: Fixed (with Meniscus Achromatic Lens only), or Adjustable (with any listed lens). Lenses: Meniscus Achromatic; Rapid Rectilinear—No. 1, $4\frac{1}{4}$ -inch focus; No. 1A, $5\frac{1}{4}$ -inch focus; or Kodak Anastigmat, *f*.7.7—No. 1, $4\frac{1}{3}$ -inch focus; No. 1A, $5\frac{1}{4}$ -inch focus. Kodak Ball Bearing Shutter with cable and finger release. Speeds: No. 1, with Meniscus Achromatic or Rapid Rectilinear Lens, $\frac{1}{25}$ and $\frac{1}{50}$ second; with Kodak Anastigmat, *f*.7.7 Lens, $\frac{1}{25}$, $\frac{1}{50}$ and $\frac{1}{100}$ second; No. 1A, $\frac{1}{25}$, $\frac{1}{50}$ and $\frac{1}{100}$ second. Both with time and "bulb" actions. Multiple speed shutter with Kodak Anastigmat, *f*.7.7, on 1A only. Brilliant finder; reversible for vertical or horizontal pictures. Body covered with fine seal-grain leather. Tripod sockets. Metal parts finished in nickel and black enamel. Black bellows. Autographic feature.

Prices

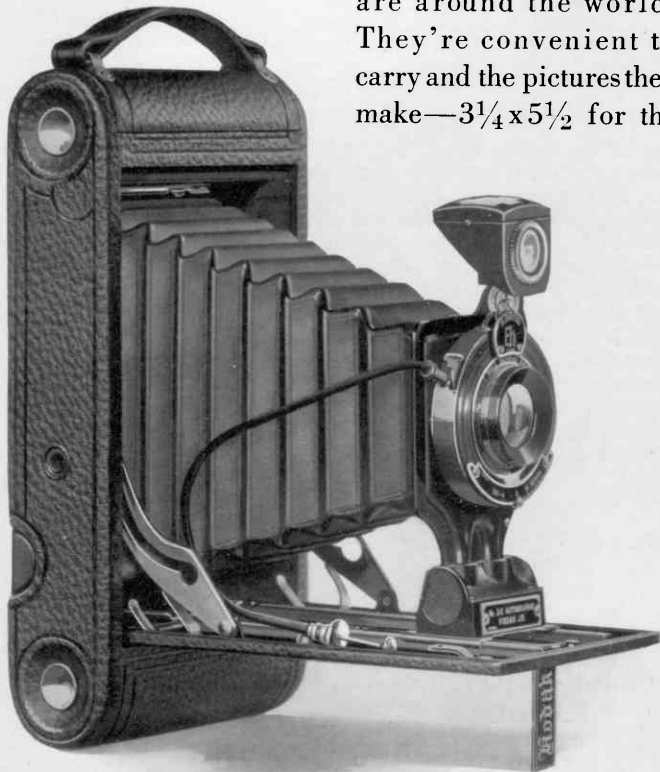
	No. 1	No. 1A
Autographic Kodak Junior (fixed focus), Meniscus Achromatic Lens and Kodak Ball Bearing Shutter	\$12.00	\$13.00
Autographic Kodak Junior (focusing model, with scale), Meniscus Achromatic Lens and Kodak Ball Bearing Shutter	12.00	13.00
With Rapid Rectilinear Lens	14.00	15.00
With Kodak Anastigmat Lens, <i>f</i> .7.7	19.00	20.00
With Kodak Anastigmat Lens, <i>f</i> .7.7, multiple speed shutter		24.00
Black Sole Leather Case, with strap	3.00	3.00
Autographic Film Cartridge, 12 exposures (No. A 116) for No. 1A60
Ditto, 6 exposures (No. A 120) for No. 1; (No. A 116) for No. 1A25	.30
Kodak Portrait Attachment (see page 41)75	.75
Kodak Self Timer (see page 52)	1.25	1.25

The prices of cameras and film include the Excise Tax

Nos. 2C and 3A Autographic Kodak Juniors

Travel pictures are so highly valued that it is a real tribute to the 2C and 3A Juniors to be so often the camera selection of the tourist. Both instruments are big in everything but bulk and mechanically and optically are fully capable of giving a good account of themselves—and the trip.

And these cameras are just as good around the home as they are around the world. They're convenient to carry and the pictures they make— $3\frac{1}{4} \times 5\frac{1}{2}$ for the



If it isn't an Eastman, it isn't a Kodak

3A and $2\frac{7}{8} \times 4\frac{7}{8}$ for the 2C—are sized and proportioned to fit the view.

The lens and shutter equipment is of such excellence that good picture-making becomes all the easier, and the presence of the autographic feature means the presence of the date and title when you want it.

The choice of three lenses includes Meniscus Achromatic, Rapid Rectilinear and Kodak Anastigmat, *f*.7.7. All are honestly made and carefully tested but the Anastigmat advantages—sharpness and definition—that come with the Kodak Anastigmat, whether with Kodak Ball Bearing or multiple speed shutter, are well worth the small advance in price.

Details

Size of pictures: No. 2C, $2\frac{7}{8} \times 4\frac{7}{8}$ inches; No. 3A, $3\frac{1}{4} \times 5\frac{1}{2}$ inches. Size of Kodak: No. 2C, $1\frac{3}{4} \times 4\frac{3}{8} \times 8\frac{3}{4}$ inches; No. 3A, $1\frac{15}{16} \times 5\frac{1}{8} \times 9\frac{3}{4}$ inches. Capacity without reloading: Both, 10 exposures. Weight: No. 2C, 34 ounces; No. 3A, 37 ounces. Adjustable focus only with automatic focusing lock. Lenses: Meniscus Achromatic; Rapid Rectilinear—No. 2C, $5\frac{1}{2}$ -inch focus; No. 3A, $6\frac{3}{4}$ -inch focus; or Kodak Anastigmat, *f*.7.7—No. 2C, $5\frac{1}{2}$ -inch focus; No. 3A, $6\frac{3}{4}$ -inch focus. Kodak Ball Bearing Shutter with cable and finger release. Speeds: $\frac{1}{25}$, $\frac{1}{50}$ and $\frac{1}{100}$ second, and time and “bulb” actions. Multiple speed shutter with Anastigmat equipment only. Brilliant finder; reversible for vertical or horizontal pictures. Back and bed of aluminum, covered with fine seal-grain leather. Metal parts finished in nickel and black enamel. Black bellows. Autographic feature. Two tripod sockets.

Prices

Autographic Kodak Junior, with Meniscus Achromatic Lens and Kodak Ball Bearing Shutter	No. 2C	No. 3A
With Rapid Rectilinear Lens	\$16.00	\$17.50
With Kodak Anastigmat Lens, <i>f</i> .7.7	18.00	20.00
With Kodak Anastigmat Lens, <i>f</i> .7.7, and multiple speed shutter	23.00	25.00
Black Sole Leather Case, with strap	27.00	29.00
Autographic Film Cartridge, 10 exposures (No. A 130) for No. 2C; (No. A 122) for No. 3A	3.25	3.75
Ditto, 6 exposures75	.90
Kodak Portrait Attachment (see page 41)45	.55
Kodak Self Timer (see page 52)75	.75
	1.25	1.25

The prices of cameras and film include the Excise Tax

and exactly how to use them under the light conditions that prevail is graphically shown by the automatic exposure dial.

The lens is the Eastman-made, Kodak Anastigmat, $f.7.7$, and sharp negatives result as a matter of course.

The No. 1A, Series III, and the No. 2C, Series III, are identical in finish and equipment, but the No. 1A makes pictures $2\frac{1}{2} \times 4\frac{1}{4}$ and the No. 2C, $2\frac{7}{8} \times 4\frac{7}{8}$ inches.

Both are autographic, of course, and both include among their refinements the rising front as well as a quick-action focusing feature that again stamps these cameras as "something different."

Series III Kodaks are new additions to the line. They'll find many friends—and keep them.

Details

Size of pictures: No. 1A, $2\frac{1}{2} \times 4\frac{1}{4}$ inches; No. 2C, $2\frac{7}{8} \times 4\frac{7}{8}$ inches. Size of Kodak: No. 1A, $1\frac{1}{16} \times 8 \times 3\frac{3}{16}$ inches; No. 2C, $1\frac{1}{16} \times 8\frac{3}{4} \times 3\frac{3}{8}$ inches. Capacity without reloading: No. 1A, 12 exposures; No. 2C, 10 exposures. Weight: No. 1A, 27 ounces; No. 2C, 35 ounces. Adjustable focus only with lever focusing device. Lens: Kodak Anastigmat, $f.7.7$ —No. 1A, 5¼-inch focus; No. 2C, 5½-inch focus. Diomatic Shutter with cable and finger release. Speeds: $\frac{1}{10}$, $\frac{1}{25}$, $\frac{1}{50}$, $\frac{1}{100}$, as well as time and "bulb" actions. Brilliant finder; reversible for horizontal or vertical pictures. Body: Aluminum. Covering: Baby crepe grain cowhide. Metal parts finished in nickel and black enamel. Black bellows. Autographic feature. Two tripod sockets. Rising and falling front.

Prices

Kodak, Series III, with Kodak Anastigmat Lens, $f.7.7$, and Diomatic Shutter	No. 1A	No. 2C
Black Sole Leather Case, with strap	\$30.00	\$33.00
Autographic Film Cartridge, 12 exposures (No. A 116) for No. 1A; 10 exposures (No. A 130) for No. 2C	3.00	3.50
Ditto, 6 exposures (No. A 116) for No. 1A; (No. A 130) for No. 2C60	.75
Kodak Portrait Attachment (see page 41)30	.45
Kodak Self Timer (see page 52)75	.75
	1.25	1.25

The prices of cameras and film include the Excise Tax

Nos. 3 and 3A Autographic Kodaks

Together with the Special Kodaks in the same sizes, the Nos. 3 and 3A Kodaks are the only instruments in the catalog that permit the use of Kodak Cut Film as well as roll film. By the addition of the Combination Back (page 30) either camera accommodates Kodak Cut Film, regular or *Super Speed*, as well as plates if desired.



If it isn't an Eastman, it isn't a Kodak

Add to this such an unusual feature as the rising front and the fact that both the 3 and 3A Kodaks offer excellent lens and shutter equipment, and the reason for their reputation as distinctive picture-makers is apparent.

Details

Size of pictures: No. 3, $3\frac{1}{4} \times 4\frac{1}{4}$ inches; No. 3A, $3\frac{1}{4} \times 5\frac{1}{2}$ inches. Size of Kodak: No. 3, $1\frac{3}{4} \times 4\frac{1}{2} \times 7\frac{1}{2}$ inches; No. 3A, $2 \times 4\frac{3}{4} \times 9\frac{1}{2}$ inches. Capacity without reloading: No. 3, 12 exposures; No. 3A, 10 exposures. Weight: No. 3, 30 ounces; No. 3A, 41 ounces. Adjustable focus only, with automatic focusing lock. No. 3A has double focusing scale for films or plates. Rising, falling and sliding fronts. Lenses: Rapid Rectilinear, No. 3, $5\frac{1}{4}$ -inch focus; No. 3A, $6\frac{1}{2}$ -inch focus; Kodak Anastigmat, *f*7.7, No. 3, $5\frac{1}{4}$ -inch focus; No. 3A, $6\frac{3}{4}$ -inch focus. Kodak Ball Bearing Shutter with cable and finger release; or on the 3A with anastigmat equipment only, multiple speed shutter with cable and finger release. Speeds: Kodak Ball Bearing Shutter, $\frac{1}{25}$, $\frac{1}{50}$ and $\frac{1}{100}$ second, and time and "bulb" actions. Brilliant finder; reversible for vertical or horizontal pictures. Back and bed of aluminum, covered with fine seal grain leather. Metal parts finished in nickel and black enamel. Black bellows. Autographic feature. Two tripod sockets.

Prices

	No. 3	No. 3A
Autographic Kodak, Rapid Rectilinear Lens, Kodak Ball Bearing Shutter	\$19.00	\$22.50
Ditto, with Kodak Anastigmat Lens, <i>f</i> 7.7	24.00	27.50
Ditto, with Kodak Anastigmat Lens, <i>f</i> 7.7, and multiple speed shutter		31.50
Black Sole Leather Case, with strap	3.50	4.00
Combination Back for cut film or plates	4.00	4.00
Double Glass Plate Holders, each	1.50	1.50
Kodak Cut Film Sheaths, each10	.15
Kodak Cut Film, package of 1267	.93
Kodak Cut Film, <i>Super Speed</i> , package of 1277	1.03
Autographic Film Cartridges, 12 exposures (No. A 118) for No. 3; 10 exposures (No. A 122) for No. 3A90	.90
Ditto, 6 exposures45	.55
Kodak Portrait Attachment (see page 41)75	.75
Kodak Self Timer (see page 52)	1.25	1.25

The prices of cameras and film include the Excise Tax

No. 1 Autographic Kodak *Special*

At the Kodak factories, there is no model in which the organization takes more pride than the No. 1 Kodak *Special*. A camera hardly as large as your hand, whose equipment includes the high-speed, sharp-cutting Kodak Anastigmat Lens, *f*.6.3, and Kodamatic Shutter with seven adjustable speeds from $\frac{1}{200}$ of a second to $\frac{1}{2}$ second, is just about an optical and



If it isn't an Eastman, it isn't a Kodak

mechanical masterpiece. The enthusiasm of the people who made the camera is logically shared by those who make pictures with it.

And as for photographic refinements, rising front, counter-sunk autographic attachment and an automatic exposure dial that indicates the speed to use under the light conditions that obtain and with the lens opening used, offer the camerist important assistance in better picture-making.

While satisfying, the No. 1 *Special* picture is not large.

However, the crisp quality that the Kodak Anastigmat, *f*6.3, puts in the negative is such that large prints may easily be made; and so good are No. 1 *Special* pictures that you will certainly want some of them in a size big enough to top the table or brighten the wall.

In appearance, the No. 1 *Special*, with its smart design and handsome finish in nickel and genuine sealskin, more than satisfies the most exacting taste.

Details

Size of pictures: $2\frac{1}{4} \times 3\frac{1}{4}$ inches. Size of Kodak: $1\frac{5}{16} \times 3\frac{3}{16} \times 6\frac{7}{16}$ inches. Capacity without reloading: 6 exposures. Weight: 18 ounces. Adjustable focus only, with screw focusing device. Lenses: For details, see price list below. Shutter: Kodamatic with cable release. Speeds: Seven, from $\frac{1}{200}$ to $\frac{1}{2}$ second, with time and "bulb" actions. Brilliant finder; reversible for vertical or horizontal pictures. Aluminum body covered with finest quality genuine sealskin. Metal parts finished in nickel and black enamel. Black leather bellows. Autographic feature. Two tripod sockets.

Prices

No. 1 Autographic Kodak <i>Special</i> , with Kodak Anastigmat Lens, <i>f</i> 6.3, $4\frac{1}{2}$ -inch focus, and Kodamatic Shutter	\$50.00
No. 1 Autographic Kodak <i>Special</i> , with Bausch & Lomb Kodak Anastigmat, <i>f</i> 6.3 Lens No. 1, $4\frac{1}{2}$ -inch focus, and Kodamatic Shutter	62.00
No. 1 Autographic Kodak <i>Special</i> , with Bausch & Lomb Tessar Series IIb, <i>f</i> 6.3 Lens No. 3, $4\frac{1}{2}$ -inch focus, and Kodamatic Shutter	74.00
No. 1 Autographic Kodak <i>Special</i> , with Bausch & Lomb Tessar Series Ic, <i>f</i> 4.5 Lens No. 12, $3\frac{1}{2}$ -inch focus, and Kodamatic Shutter	71.00
Long-grain Leather, Velvet-lined Case, with strap	3.75
Autographic Film Cartridge, 6 exposures (No. A 120)25
Kodak Portrait Attachment (see page 41)75
Kodak Self Timer (see page 52)	1.25

The prices of cameras and film include the Excise Tax

No. 1A Autographic Kodak *Special*

With the 1A *Special* you're ready for the entire range of pictures in the hand camera field. There's the Kodak Anastigmat Lens, *f*.6.3, for example, giving keen definition and



If it isn't an Eastman, it isn't a Kodak

a speed that secures successful snap-shots under unfavorable light conditions. There's the Kodamatic Shutter with seven accurate snap-shot speeds from $\frac{1}{200}$ (fast enough for action pictures) to $\frac{1}{2}$ second and time and "bulb." There are such niceties of equipment as the rising front and the Kodak Range Finder, the device that finds the focus. And then there is the size of the picture, $2\frac{1}{2} \times 4\frac{1}{4}$, perhaps the most popular in photography.

Like the other *Specials*, the 1A is as fine a photographic instrument as it is possible to make. The equipment indicates it. The pictures prove it.

The 1A *Special*, as described, is the newest of the *Special* Kodaks, and this marks its photographic premiere as far as the catalog is concerned.

Details

Size of pictures: $2\frac{1}{2} \times 4\frac{1}{4}$ inches. Size of Kodak: $1\frac{1}{2} \times 3\frac{5}{16} \times 8$ inches. Capacity without reloading: 12 exposures. Weight: 27 ounces. Adjustable focus only with screw focusing device. Lens: Kodak Anastigmat, *f*6.3. Kodamatic Shutter with cable release. Speeds: Seven, from $\frac{1}{200}$ to $\frac{1}{2}$ second, with time and "bulb" actions. Brilliant finder; reversible for horizontal or vertical pictures. Aluminum body covered with finest quality genuine sealskin. Metal parts finished in nickel and black enamel. Black leather bellows. Autographic feature. Two tripod sockets. Range Finder. Rising and falling front.

Prices

No. 1A Autographic Kodak <i>Special</i> , with Kodak Anastigmat Lens, <i>f</i> 6.3, 5-inch focus, and Kodamatic Shutter	\$60.00
Long-grain Leather, Velvet-lined Case, with strap	4.50
Autographic Film Cartridge, 12 exposures (No. A 116)60
Ditto, 6 exposures30
Kodak Portrait Attachment (see page 41)75
Kodak Self Timer (see page 52)	1.25

The prices of cameras and film include the Excise Tax

No. 2C Autographic Kodak *Special*

If the picture is photographically possible, the 2C *Special* is equal to the occasion. Its lens, Kodak Anastigmat, $f.6.3$, has a speed that saves the situation even under unfavorable light



If it isn't an Eastman, it isn't a Kodak

conditions and gives sharp, clean-cut negatives from which it is a delight to print. And to support this lens to the limit, the Kodamatic Shutter offers seven automatic speeds from $\frac{1}{150}$ to $\frac{1}{2}$ second, together with time and "bulb," and these speeds are dependably accurate.

There has been a growing preference among amateurs for the $2\frac{7}{8} \times 4\frac{7}{8}$ picture—the 2C size. There's generous space for the story; the proportions are pleasing and fit the view. This ideal size deserves a superfine camera, and with the 2C *Special* it gets it.

Photographic refinements are present, of course. There's the Kodak Range Finder that finds the focus when you don't care to gauge with your eye. There's the rising front and, as a part of the Kodamatic Shutter, a self-selecting exposure plate that gives at a glance the speed and stop you want with the light you have.

The No. 2C *Special* is made of aluminum and is handsomely covered with finest quality sealskin.

Details

Size of pictures: $2\frac{7}{8} \times 4\frac{7}{8}$ inches. Size of Kodak: $1\frac{9}{16} \times 8\frac{3}{4} \times 3\frac{3}{8}$ inches. Capacity without reloading: 10 exposures. Weight: 32 ounces. Adjustable focus only with screw focusing device. Lens: Kodak Anastigmat, *f*6.3. Kodamatic Shutter with cable release. Speeds: Seven, from $\frac{1}{150}$ to $\frac{1}{2}$ second, with time and "bulb" actions. Brilliant finder; reversible for horizontal or vertical pictures. Aluminum body covered with finest quality genuine sealskin. Metal parts finished in nickel and black enamel. Black leather bellows. Autographic feature. Two tripod sockets. Range Finder. Rising and falling front.

Prices

No. 2C Autographic Kodak <i>Special</i> , with Kodak Anastigmat Lens, <i>f</i> 6.3, 6-inch focus, and Kodamatic Shutter	\$65.00
Long-grain Leather, Velvet-lined Case, with strap	5.00
Autographic Film Cartridge, 10 exposures (No. A 130)75
Ditto, 6 exposures45
Kodak Portrait Attachment (see page 41)75
Kodak Self Timer (see page 52)	1.25

The prices of cameras and film include the Excise Tax

Nos. 3 and 3A Autographic Kodaks, *Special*

Equipment that includes the fast Kodak Anastigmat, *f.6.3*, Lens and the Kodamatic Shutter stamps these two Kodaks as *Specials* even before you note the name. They are superior cameras—both of them, and equipment, materials and finish carry this idea to the limit.



If it isn't an Eastman, it isn't a Kodak

The Combination Back (page 30) converts either camera for use with Kodak Cut Film or plates, and the 3A has the further refinement of the Kodak Range Finder.

Details

Size of pictures: No. 3, $3\frac{1}{4} \times 4\frac{1}{4}$ inches; No. 3A, $3\frac{1}{4} \times 5\frac{1}{2}$ inches. Size of Kodak: No. 3, $1\frac{1}{8} \times 4\frac{1}{2} \times 8$ inches; No. 3A, $2 \times 4\frac{3}{4} \times 9\frac{1}{2}$ inches. Capacity without reloading: No. 3, 12 exposures; No. 3A, 10 exposures. Weight: No. 3, 32 ounces; No. 3A, 42 ounces. Adjustable focus, with rack and pinion for focusing, also regular focusing scale; No. 3 equipped with spirit level; No. 3A, with Kodak Range Finder. Rising, sliding and falling front. Lenses: For details, see price heading below. Kodamatic, Ilex Acme or Optimo Shutter with cable and finger release. Speeds: Kodamatic—seven speeds, No. 3, from $\frac{1}{200}$ to $\frac{1}{2}$ second; No. 3A, $\frac{1}{150}$ to $\frac{1}{2}$ second. Brilliant finder. Aluminum body covered with genuine Persian Morocco. Metal parts finished in nickel and black enamel. Black leather bellows. Autographic feature. Two tripod sockets.

Prices

Autographic Kodak <i>Special</i> , with Kodak Anastigmat, <i>f</i> 6.3		
Lens, 5-inch focus on No. 3; $6\frac{3}{4}$ -inch focus on No. 3A; and		
Kodamatic Shutter	No. 3	No. 3A
	\$55.00	\$70.00
Ditto, with Ilex Acme or Optimo Shutter	45.00	60.00
Autographic Kodak <i>Special</i> , with Bausch & Lomb Kodak		
Anastigmat, <i>f</i> 6.3 Lens No. 2— $5\frac{1}{4}$ -inch focus on No. 3; Lens		
No. 4— $6\frac{3}{4}$ -inch focus on No. 3A; and Kodamatic Shutter	70.00	90.00
Ditto, with Ilex Acme or Optimo Shutter	60.00	80.00
Autographic Kodak <i>Special</i> , with Bausch & Lomb Tessar Series		
Iib Anastigmat, <i>f</i> 6.3 Lens No. 4— $5\frac{1}{4}$ -inch focus on No. 3;		
Lens No. 5K— $7\frac{1}{4}$ -inch focus on No. 3A; and Kodamatic		
Shutter	80.00	100.00
Ditto, with Ilex Acme or Optimo Shutter	70.00	90.00
Grain Leather, Velvet-lined Case, with strap	4.75	5.25
Combination Back for cut film or plates	4.50	5.00
Double Glass Plate Holders, each	1.50	1.50
Kodak Cut Film Sheaths, each10	.15
Kodak Cut Film, package of 1267	.93
Kodak Cut Film, <i>Super Speed</i> , package of 1277	1.03
Autographic Film Cartridge, 12 exposures (No. A 118) for		
No. 3; 10 exposures (No. A 122) for No. 3A90	.90
Ditto, 6 exposures45	.55
Kodak Portrait Attachment (see page 41)75	.75
Kodak Self Timer (see page 52)	1.25	1.25

The prices of cameras and film include the Excise Tax

Ciné-Kodak Makes Motion Pictures

Ciné-Kodak, the new Eastman motion picture camera, gives you pictures in motion just as easily as your folding camera now gives you "stills." You press the button; we do the rest. Pictures of the family—not to forget the children—of friends, trips, sports, you can now project through the Kodoscope and show in motion on the screen.



Nor are you confined to personal pictures. Dramas, educational features, comedies and animated cartoons may be rented through Kodoscope Libraries, Inc., and shown in your own home.

Compared with cameras using standard width film, the Ciné-Kodak reduces the operating expense of personal motion pictures over 80 per cent.

Development and reversal of the Ciné-Kodak negative so that it becomes a positive is done in the Eastman Laboratories and the charge is included in the price of the film. When you buy your film your finishing is paid for.

The Ciné-Kodak is supplied with either motor drive or crank and tripod.

Prices on page opposite. Descriptive booklet on request.

Details

Size: 8 x 4 $\frac{5}{8}$ x 8 $\frac{5}{8}$. Capacity without reloading: 100 feet daylight loading, Safety film, sufficient for 4 minutes continuous action. Weight: 7 $\frac{1}{4}$ pounds. Lens: Kodak Anastigmat, *f*3.5. Body: Aluminum.

Ciné-Kodak Motor Drive Unit

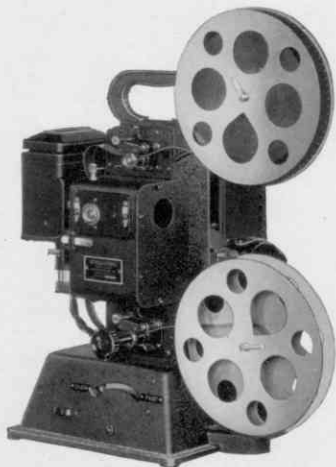
Weight: 4 $\frac{7}{8}$ pounds. Size: 6 $\frac{3}{8}$ x 2 $\frac{1}{8}$ x 7 $\frac{7}{8}$. Two volt motor.

Kodascope Projects Motion Pictures

The Kodascope throws a brilliant 30x40-inch picture when placed 18 feet from the screen.

It accommodates 400 feet of 16 millimeter width film, which is equivalent in time of projection (approximately 16 minutes) to 1000 feet of standard width motion picture film.

Thread the film in the Kodascope, turn the switches for light and motor, and then sit down and enjoy the picture.



Details

Size: 18½ x 14¾ x 10¾ inches. Weight: 20 pounds. Capacity: 400 feet of 16 millimeter width film. Lens: 50 millimeter focus, projecting a 30 x 40-inch picture at 18 feet. Illumination and power taken from any house circuit, alternating or direct current, not over 125 volts or less than 105, by attaching to ordinary bulb socket.

Prices

Ciné-Kodak Outfit

Ciné-Kodak	\$125.00
Kodak Motor Drive Unit, with battery and Charging Outfit	25.00
Kodascope and Splicer	160.00
Tripod	25.00
Screen	25.00
Outfit as above, with <i>either</i> motor drive unit or hand crank and tripod, Kodascope, splicer and screen	335.00

Ciné-Kodak Film

100-foot Rolls	\$ 6.00
50-foot Rolls	4.00
(Price includes finishing and return transportation)	

Extra Equipment

Leather Carrying Case for Kodak, Magazines and Tripod Head	\$ 18.00
Extra Battery for Motor Drive Unit	8.00
Unipod Cane	5.00
Leather Bound Canvas Case for Tripod Legs	6.50
Safety Chains for Tripod	1.25
Handle for Tripod Top	1.25

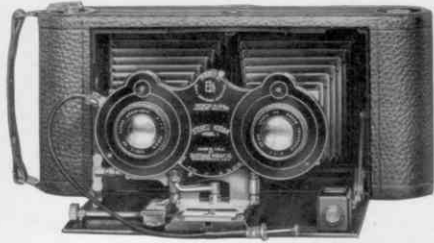
Duplicate Prints

100-foot length	\$ 6.00
50-foot length	4.00

The prices of cameras and film include the Excise Tax

The Stereo Kodak

Viewed through a stereoscope, the original perspective seems to be restored and instead of looking at the Stereo picture you are looking into it.



Details

Size of pictures: $3\frac{1}{8} \times 3\frac{3}{16}$ inches. Size of Kodak: $2\frac{3}{16} \times 4\frac{3}{4} \times 10\frac{1}{2}$ inches. Capacity: 3 exposures. Weight: 48 ounces. Rising front. Adjustable focus. Lenses: Kodak Anastigmat, $f.7.7$, $5\frac{1}{4}$ -inch focus. Speeds: $\frac{1}{25}$, $\frac{1}{50}$ and $\frac{1}{100}$ second, and time and "bulb" actions. View finder. Aluminum body covered with seal-grain leather. Black bellows. One tripod socket.

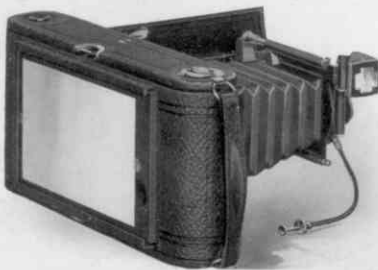
Prices

Stereo Kodak, Model No. 1, Kodak Anastigmat Lenses, $f.7.7$, and Stereo Ball Bearing Shutter	\$50.00
Stereoscope	1.25
Black Sole Leather Carrying Case, with strap	4.50
N. C. Film Cartridge (No. 101), 3 exposures, for Stereo35
Stereo Kodak Self-transposing Printing Frame	4.50

If desired, Stereo film may be developed at Rochester at \$0.20 per roll and prints made at \$0.20 each, mounted.

Combination Backs

Used with the Nos. 3 and 3A Autographic Kodaks, Regular and *Special*, in place of the regular Autographic Back, they accommodate double plate holders and a removable ground glass for focusing. With the addition of Kodak Cut Film Sheath in the plate holder, the Combination Back further equips the camera for use with Kodak Cut Film. (See page 51.)



Combination Back with ground glass, for Nos. 3 or 3A "Regular"	\$4.00
Ditto, for No. 3 <i>Special</i>	4.50
Ditto, for No. 3A <i>Special</i>	5.00
Double Plate Holders for any of above, each	1.50

No. 0 Brownie

Good pictures with least effort at smallest cost—there you have the box Brownie. Children like it because it works so easily; you'll like it because it works so well.

The lens is carefully tested and the body is strongly built and covered with imitation leather.

This camera presents a glorious opportunity for pictures of the children by the children. And such pictures, reflecting as they do the charm of childhood itself, will be among the most prized in your album.

Details

Size of pictures: 1 $\frac{5}{8}$ x 2 $\frac{1}{2}$ inches. Size of camera: 2 $\frac{5}{8}$ x 3 $\frac{3}{8}$ x 4 $\frac{1}{8}$ inches. Capacity: 8 exposures. Weight: 8 ounces. Fixed focus. Lens: Meniscus. Eastman Rotary Shutter with one stop, also time action. Two ground-glass finders for vertical and horizontal pictures. Body covered with imitation leather.



Prices

No. 0 Brownie Camera, Meniscus Lens, Eastman Rotary Shutter	\$2.00
Brownie Carrying Case	1.00
N. C. Film Cartridge, 8 exposures (No. 127)25
Brownie Tripod Adapter (see page 60)25
Kodak Portrait Attachment (see page 41)50
Developing and Printing Outfit (see page 44)	2.00

The prices of cameras and film include the Excise Tax

Nos. 2 and 2A Brownies

New Models

These two new models not only have aluminum bodies covered with imitation leather but are distinctive as well, from the presence of two tripod sockets.

Their operation is simplicity itself, and they make good pictures as a matter of course.

Details



Size of pictures: No. 2, 2¼ x 3¼ inches; No. 2A, 2½ x 4¼ inches. Size of camera: No. 2, 3 x 4 x 5⅞ inches; No. 2A, 3¼ x 5 x 6 inches. Capacity: No. 2, 6 exposures; No. 2A, 12 exposures. Weight: No. 2, 16½ ounces; No. 2A, 21½ ounces. Fixed focus only. Lens: No. 2, Single Meniscus; No. 2A, Meniscus Achromatic. Eastman Rotary Shutter: Both, three stops and time action. Two ground-glass finders for vertical and

horizontal pictures. Two tripod sockets. Aluminum body covered with imitation leather. Metal parts finished in nickel and black enamel.

Prices

Brownie Camera, Single Meniscus Lens on No. 2, Meniscus Achromatic Lens on No. 2A, Eastman Rotary Shutter	No. 2	No. 2A
Brownie Carrying Case, with strap	\$2.75	\$3.75
N. C. Film Cartridge, 12 exposures (No. 116) for 2A	1.25	1.50
Ditto, 6 exposures (No. 116) for No. 2A; (No. 120) for No. 225	.30
Kodak Portrait Attachment (see page 41)50	.50
Developing and Printing Outfit (see page 44)	2.00	2.00

The prices of cameras and film include the Excise Tax

Nos. 3 and 2C Brownies

Every Brownie has a carefully tested lens and shutter. Simple as it is in construction and operation, every camera is manufactured in Kodak shops by Kodak workmen, and Eastman standards are rigidly observed.

Details

Size of pictures: No. 3, 3¼x4¼ inches; No. 2C, 2⅞ x 4⅞ inches. Size of camera: No. 3, 4⅜ x 5½ x 6½ inches; No. 2C, 3⅞x6¼x7¼ inches. Capacity without re-loading: No. 3, 12 exposures; No. 2C, 10 exposures. Weight: No. 3, 25 ounces; No. 2C, 28 ounces. Fixed focus only. Lens: Meniscus Achromatic. Eastman Rotary Shutter, with three stops and time action. Two ground-glass finders for vertical and horizontal pictures.



No. 3 MODEL

Wood body with imitation leather. Two tripod sockets.

Prices

	No. 3	No. 2C
Brownie Camera with Meniscus Achromatic Lens and Eastman Rotary Shutter	\$4.50	\$5.00
Brownie Carrying Case, with strap	1.60	1.60
N. C. Film Cartridge, 10 exposures (No. 130), for No. 2C75
Ditto, 6 exposures45
Ditto, 12 exposures (No. 124), for No. 390	
Ditto, 6 exposures45	
Kodak Portrait Attachment (see page 41)75	.75
Developing and Printing Outfit (see page 44)	2.00	2.00

The prices of cameras and film include the Excise Tax